



SANITISER SENTINEL® IRIS

Patent Pending GB2100137.5.

Design Reg 6113640 + 6113641

The Iris is a unique, patented accessory for Sanitiser Sentinel. It has been designed to allow fully selectable detection and isolation zones and areas. The multi rotational design gives an infinite amount of ways to customise how Sanitiser Sentinel detects or isolates, giving the optimal operational performance in any installation.

The Iris is simply applied by peeling off its sticky back tape and pressing into place. The Iris is available free of charge for existing Sanitiser Sentinel users.



The isolation shields can be positioned in the left, right or central position



The outer shield can be opened to increase the area of isolation



The isolation shields can be separated to isolate both sides



The shields can be rotated to make the Sentinel pet and child friendly

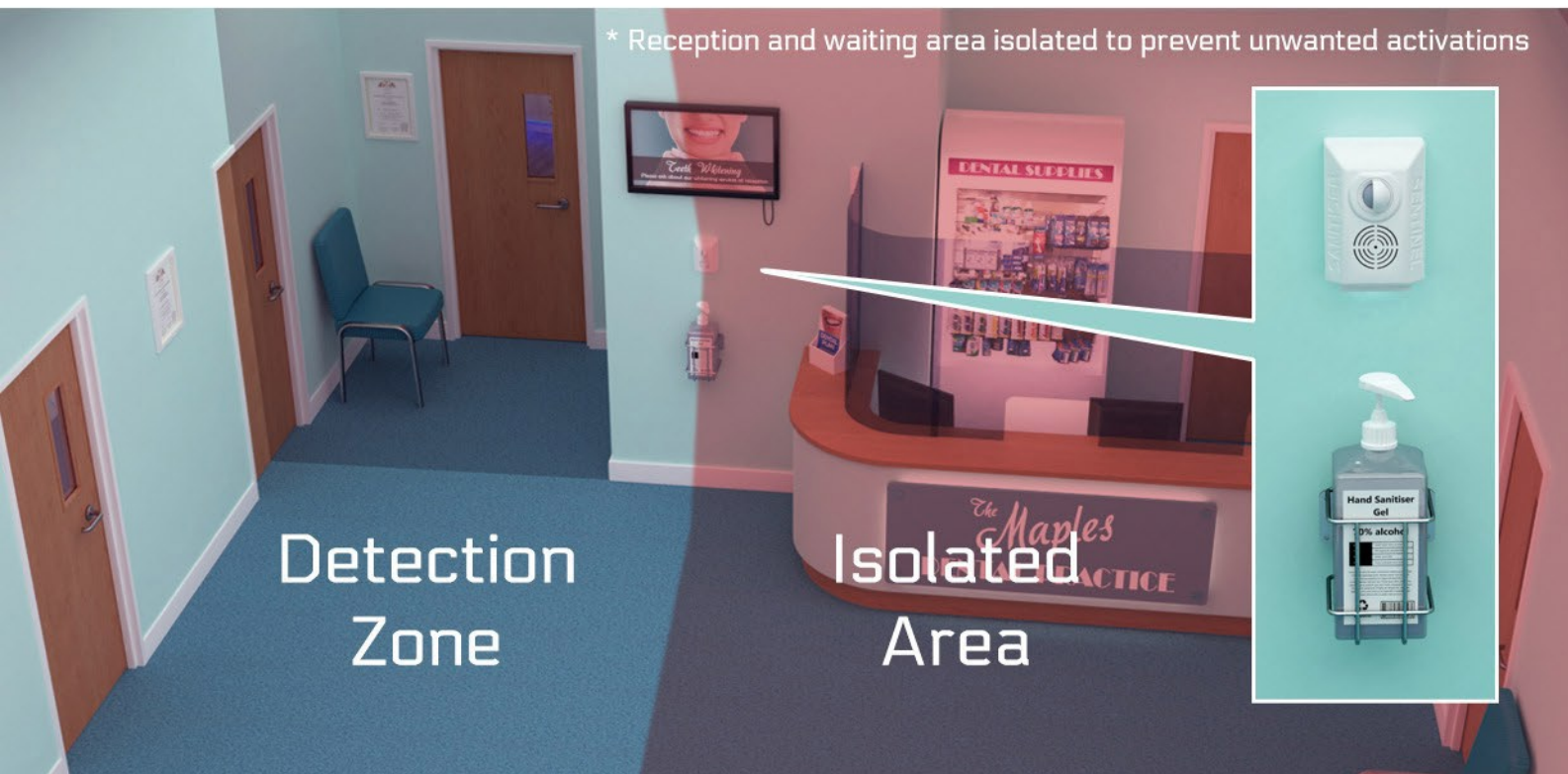
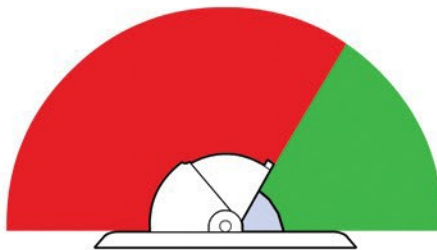
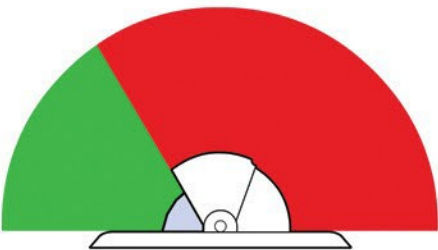
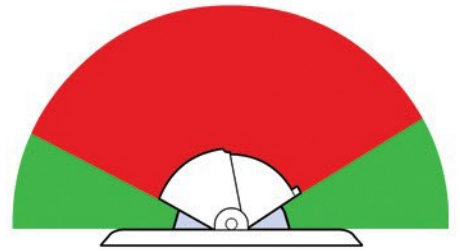
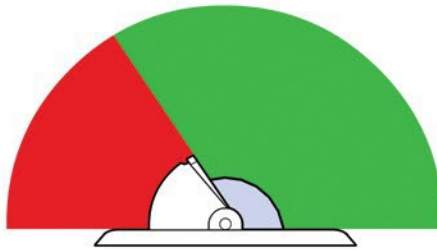
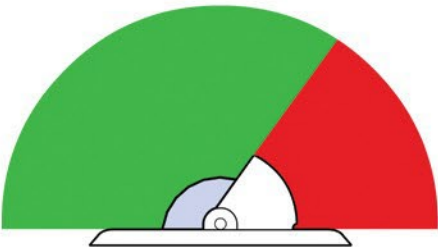
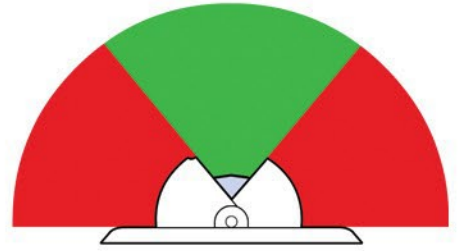


Detection Zone



Area of Isolation

Each Isolator Shield can be adjusted incrementally



* Reception and waiting area isolated to prevent unwanted activations

Detection Zone

Isolated Area